

Congratulations

Fall 2024 Strategic Foresight Graduates!

Norbertine Center for Spirituality, De Pere



Some signals we've been following...

- Rise of the flexitarian diet and personal nutrition
- Use of augmented reality in schools
- Ghost kitchens – no humans preparing the food
- Wisconsin population likely to grow
- The possibility of virtual field trips into science and history



Some things we've learned...

- A new perspective on Artificial Intelligence
- How to identify trends as we scan for signals
- Seeing broader trends through analysis
- "Agentic AI" is artificial intelligence functioning as the agent





Our Transformed Scenario

- 2028 – Virtual field trips for more interactive learning
- 2034 – Every classroom will be a global classroom
- 2038 – Augmented reality will bring our classrooms to life
- 2042 – Students will host virtual parent visits

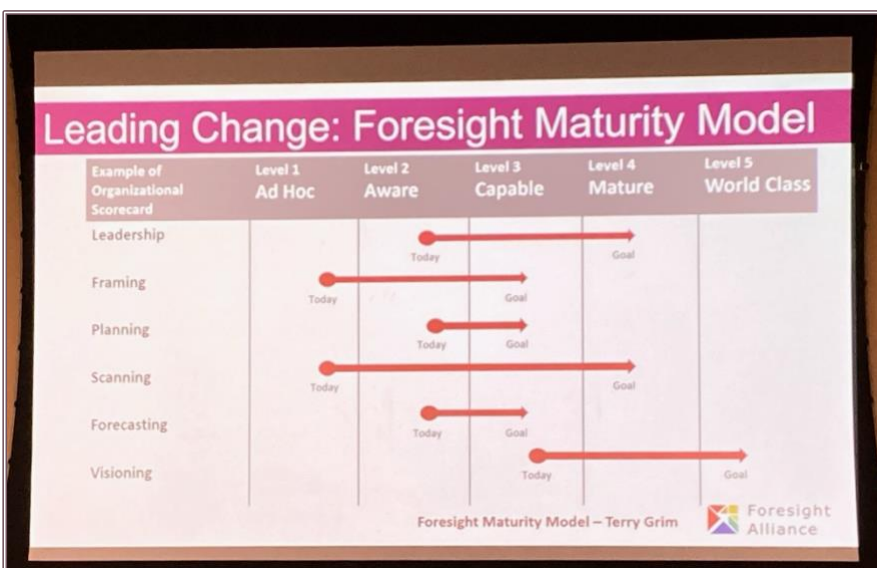


Headquartered in Stevens Point, we provide diverse and inclusive communities for older adults.



Our Transformed Scenario

- 2025 – Integrated technology
- 2027 – More integrated care models
- 2028 – An influx of retirees to Wisconsin
- 2030 – An inclusive learning collaborative has become a reality





Our Transformed Scenario

- 2025 – Fry prep automated
Cow waste used for sustainable energy
AI doing the mundane work
- 2030 – Biomanufactured dairy
Digital burger orders on automated assembly line
Robots making cheese
- 2035 – Warming drones deliver food; minimal packaging
Farms are carbon neutral
Cows on megafarms happy due to multisensory AI
- 2040 – Dairy farmers own mini-power grids
Plants are controlled in the metaverse – no more humans in the plants.



How do you keep the human touch but still have a perfect process?

Fulfillment will be more efficient due to better data.

